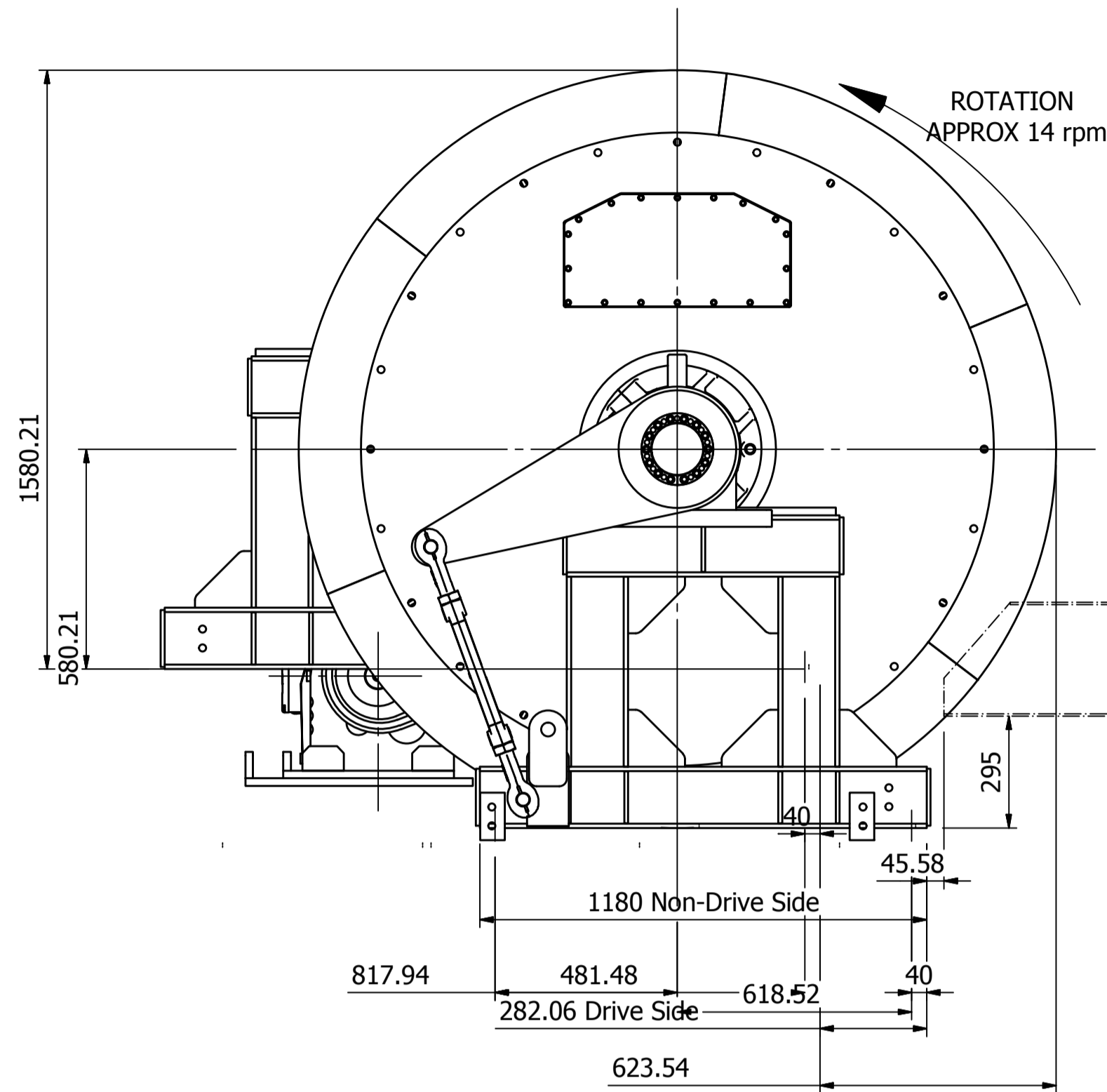
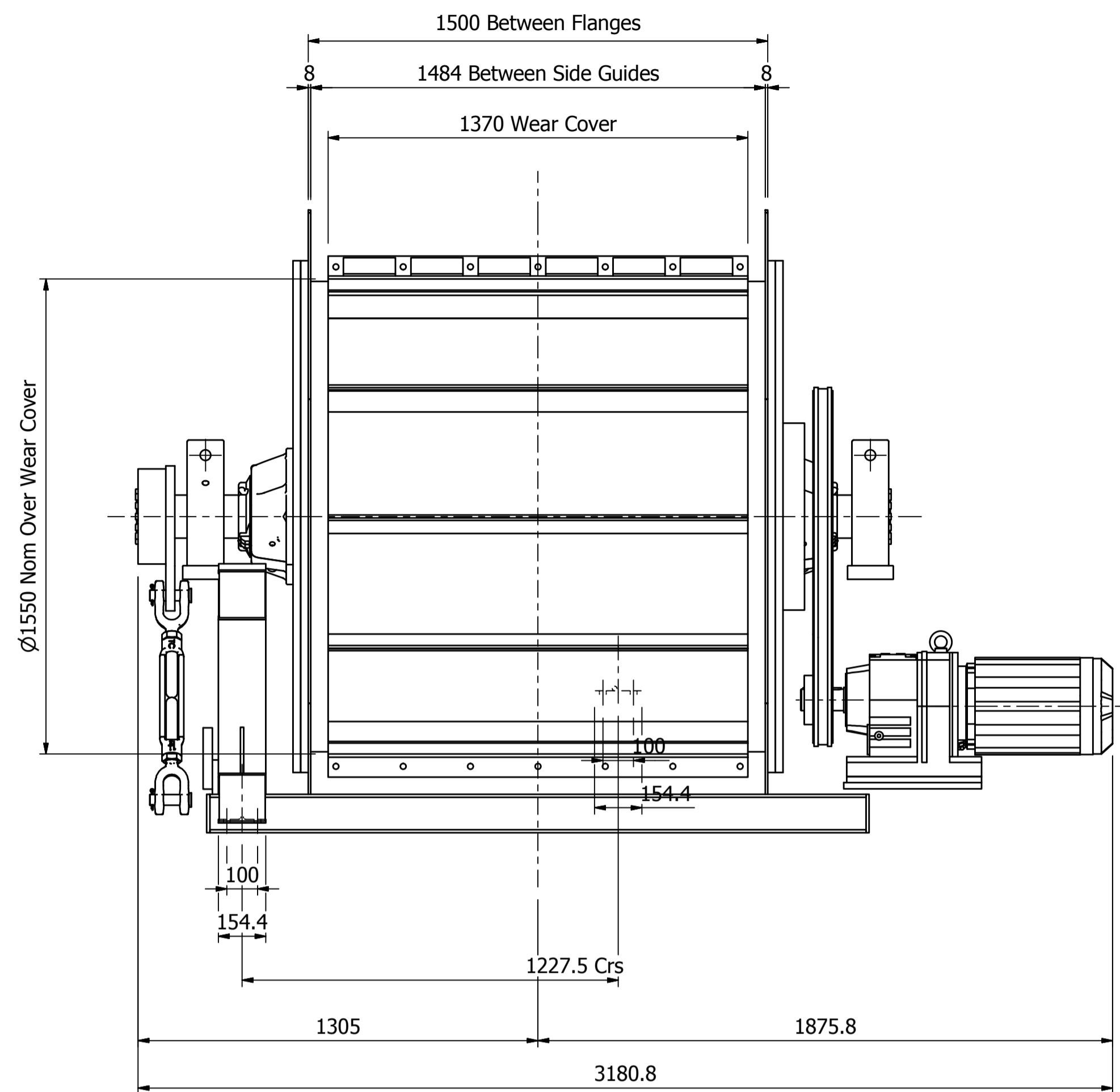
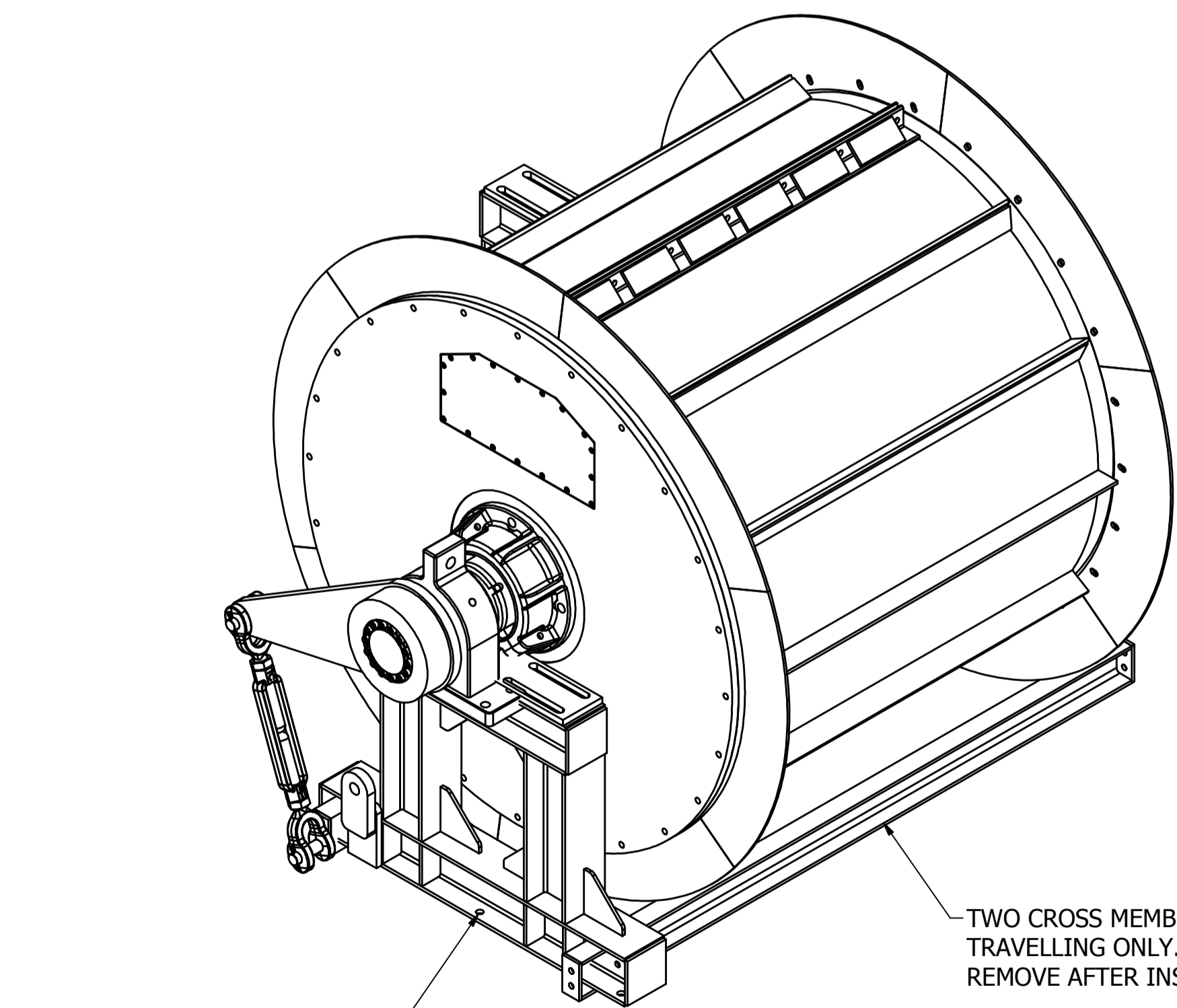
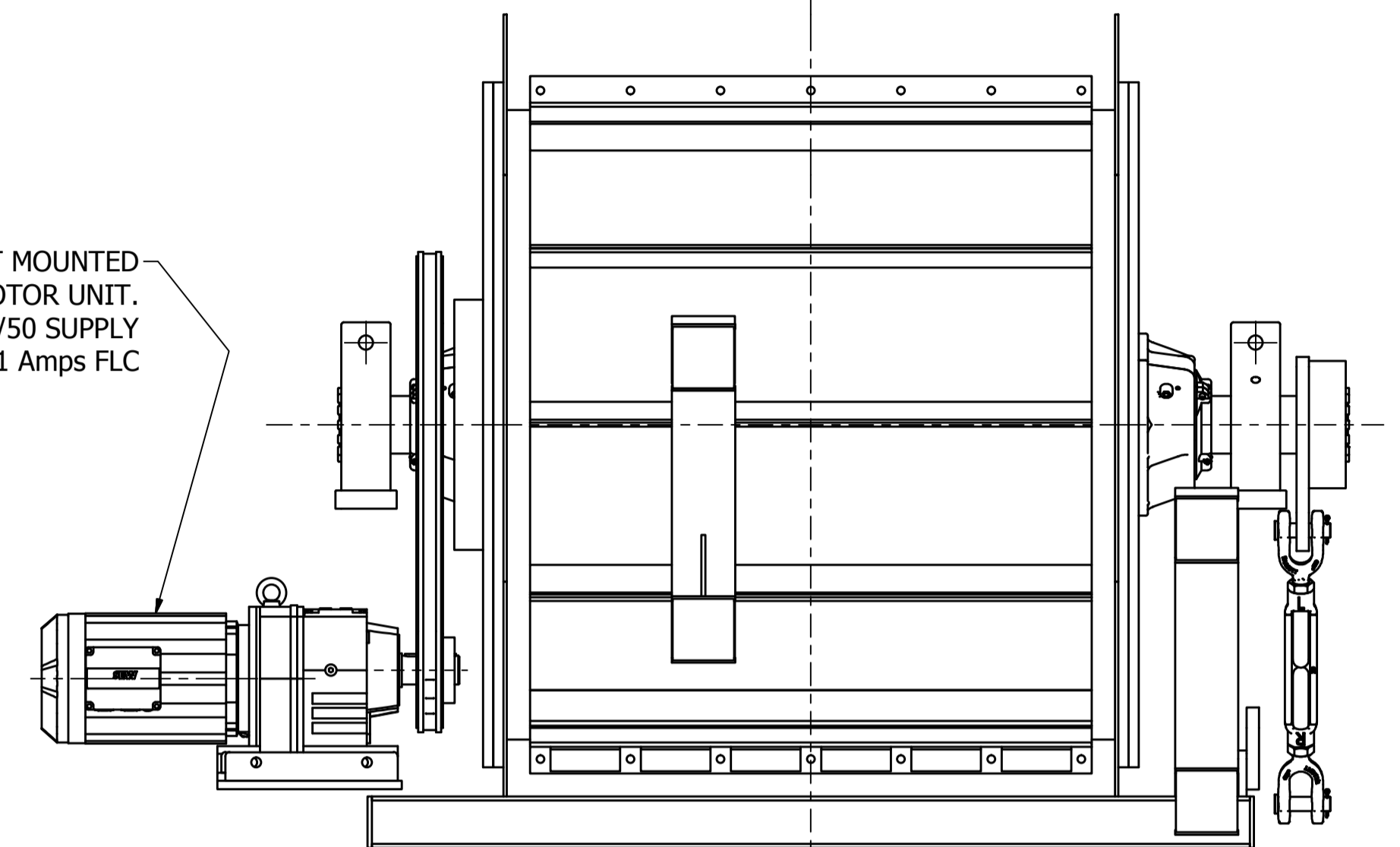


REVISION HISTORY			
REV	DESCRIPTION	DATE	APPROVED
-	Issued	09.06.2015	SR



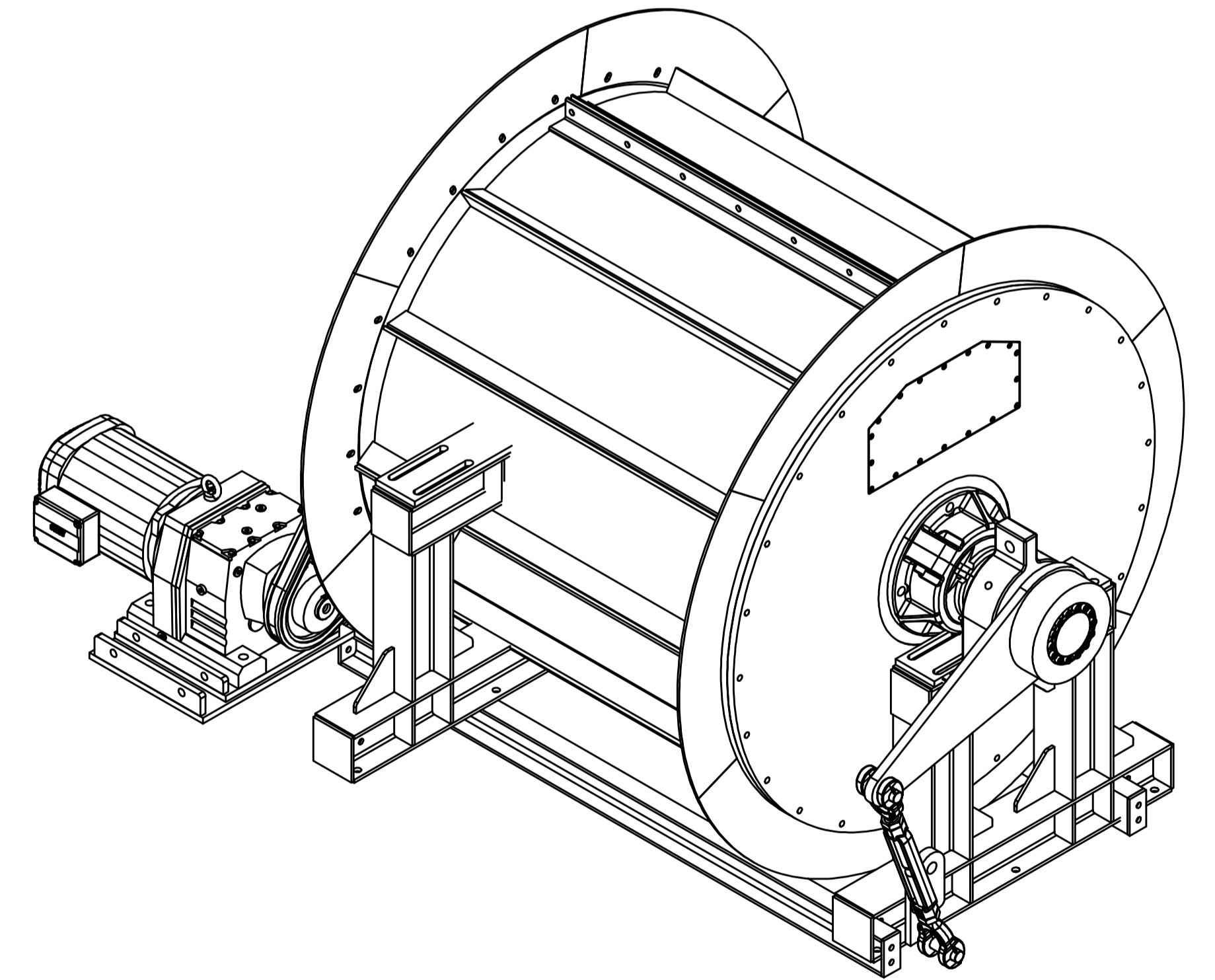
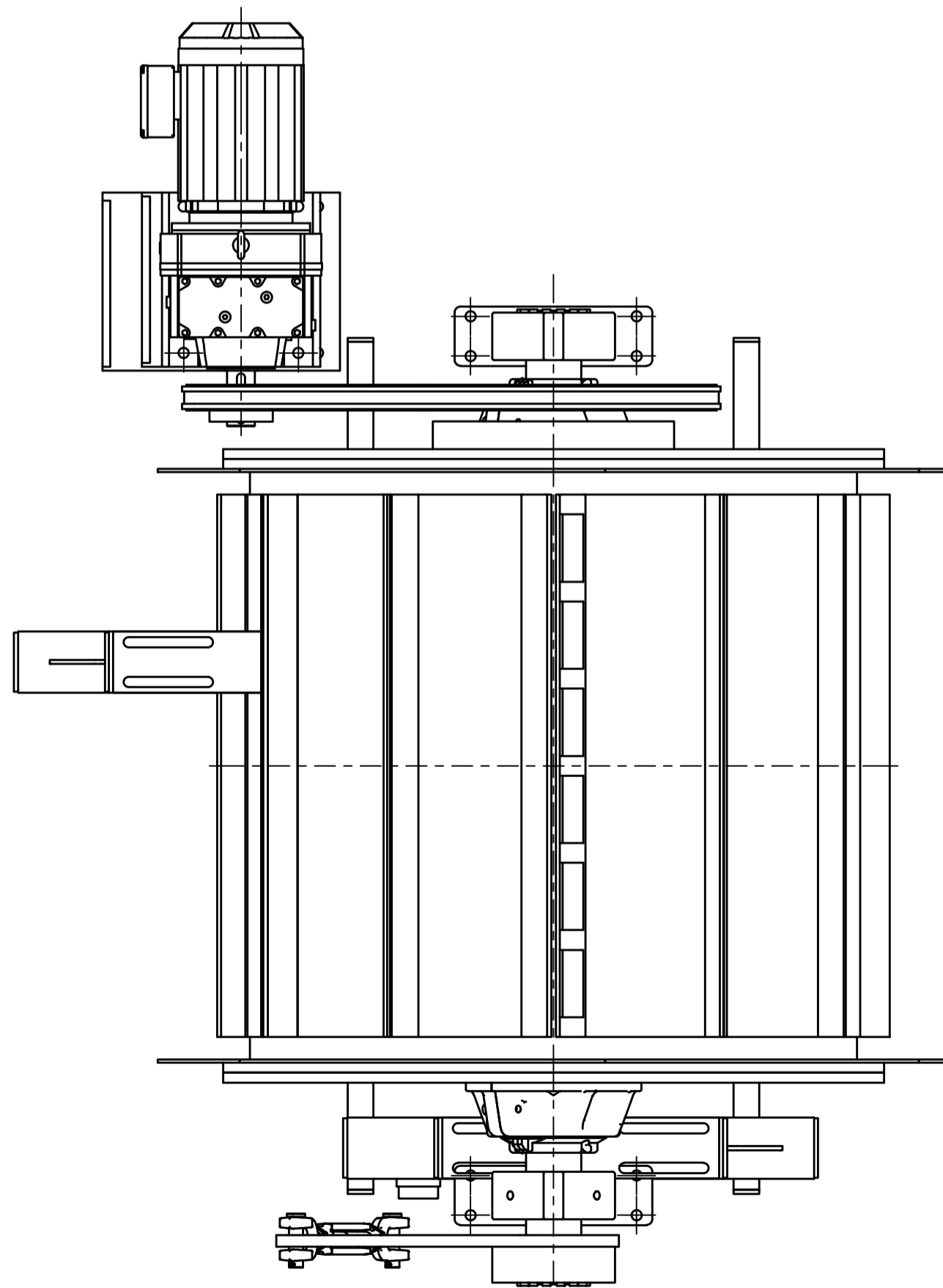
11.0 KW FOOT MOUNTED GEARED MOTOR UNIT.
400/3/50 SUPPLY
21 Amps FLC

APPROX POSITION FOR FEEDER.
FIRST 1500mm OF TRAY SHOULD BE CONSTRUCTED FROM NON-MAGNETIC MATERIAL.



6 - Ø22 HOLES NON-DRIVE SIDE
8 - Ø22 HOLES DRIVE SIDE FOR FIXING DOWN.

TWO CROSS MEMBERS FOR TRAVELLING ONLY. REMOVE AFTER INSTALLATION.



Please note:
1) Drawing for sales proposal use only.
2) Drawing may be subject to changes without notification.

DO NOT SCALE, if in doubt ask.

TOTAL MASS	N/A	CHECKED	SR
COLOUR	N/A	APPVD	SR
		DATE	09/06/2015
		PROJECTION	

Magnapower Equipment Ltd
28 Harris Business park
Hanbury Road
Worcestershire
B60 4DJ
UK
Tel : 0044(0)1527 557092
Fax : 0044(0)1527 557019
Email : info@magnapower.co.uk

MAGNAPOWER

TITLE	PFD 150-150 Drum With Base Frame	DATE	27/05/2015	DRAWN	SR
DRG. No	945.C.0002	REV	-		

The information contained in this drawing is the confidential property of Magnapower Equipment Ltd and should not be passed on or related to a third party without the written consent of Magnapower Equipment Ltd